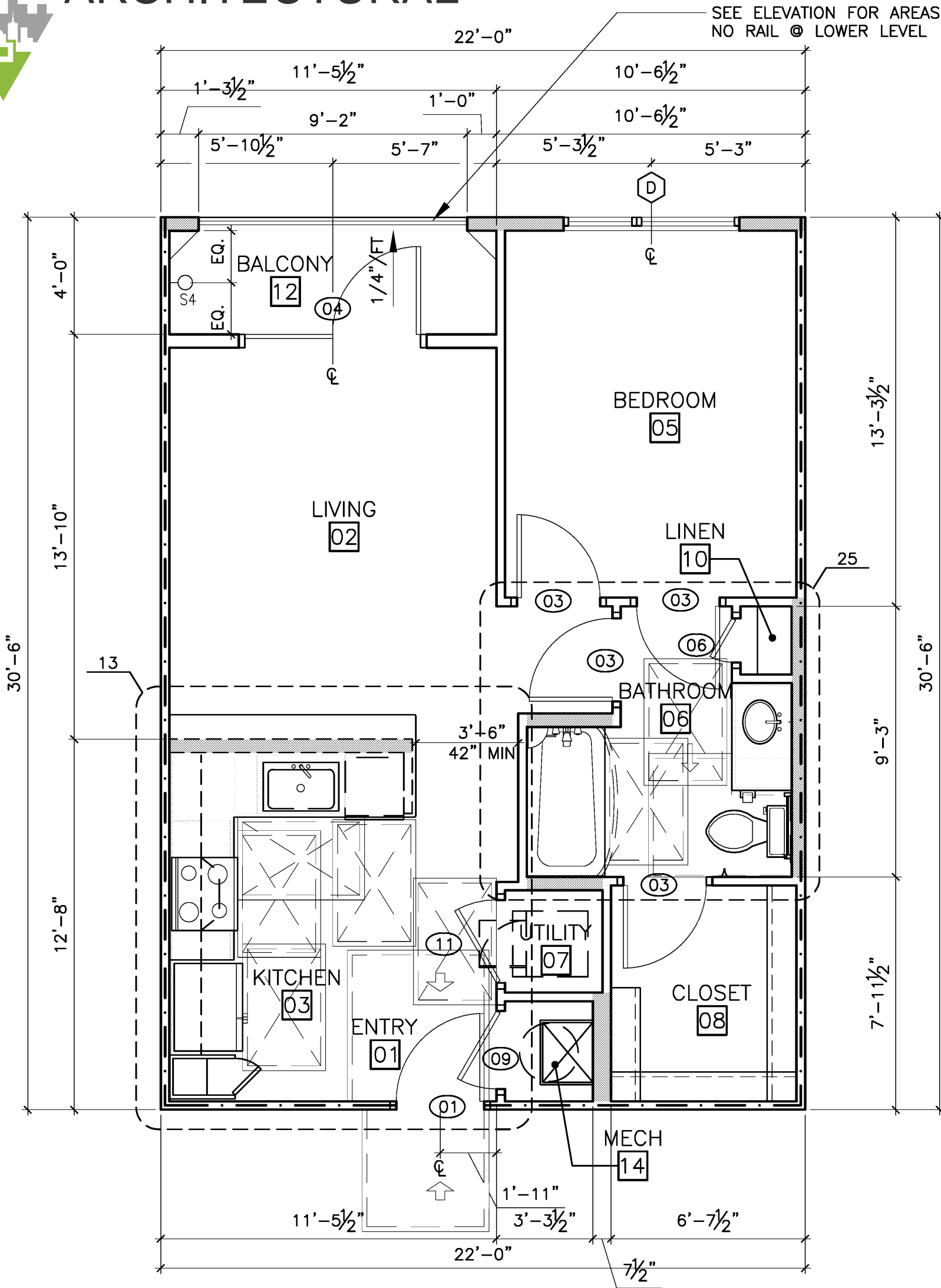




ARCHITECTURAL

SEE ELEVATION FOR AREAS WITH NO RAIL @ LOWER LEVEL



28

Unit A1 - Condition 1

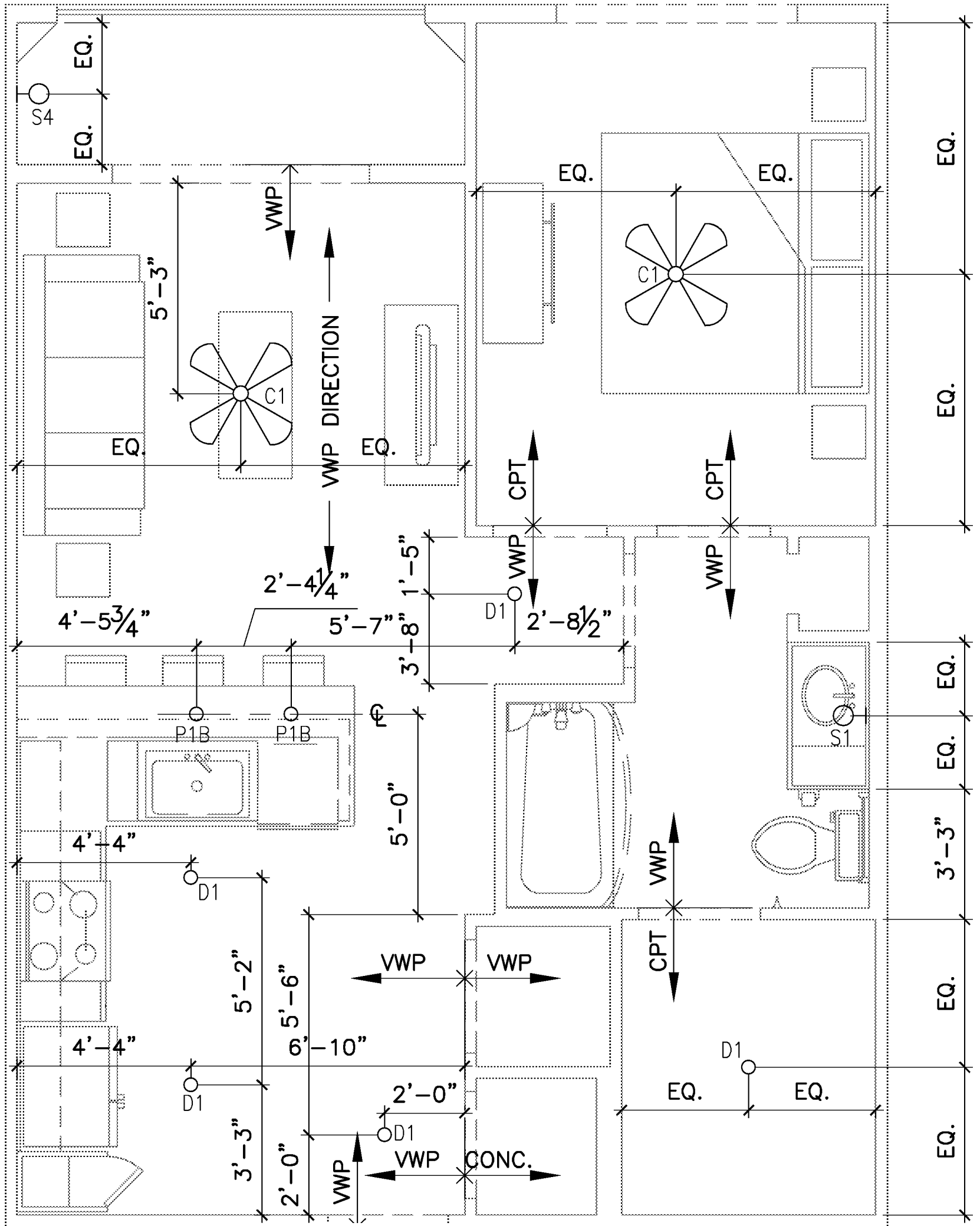
Scale: 1/4" = 1'-0"

(39 of 309)

625 NSF
671 GSF



RCP - PLAN



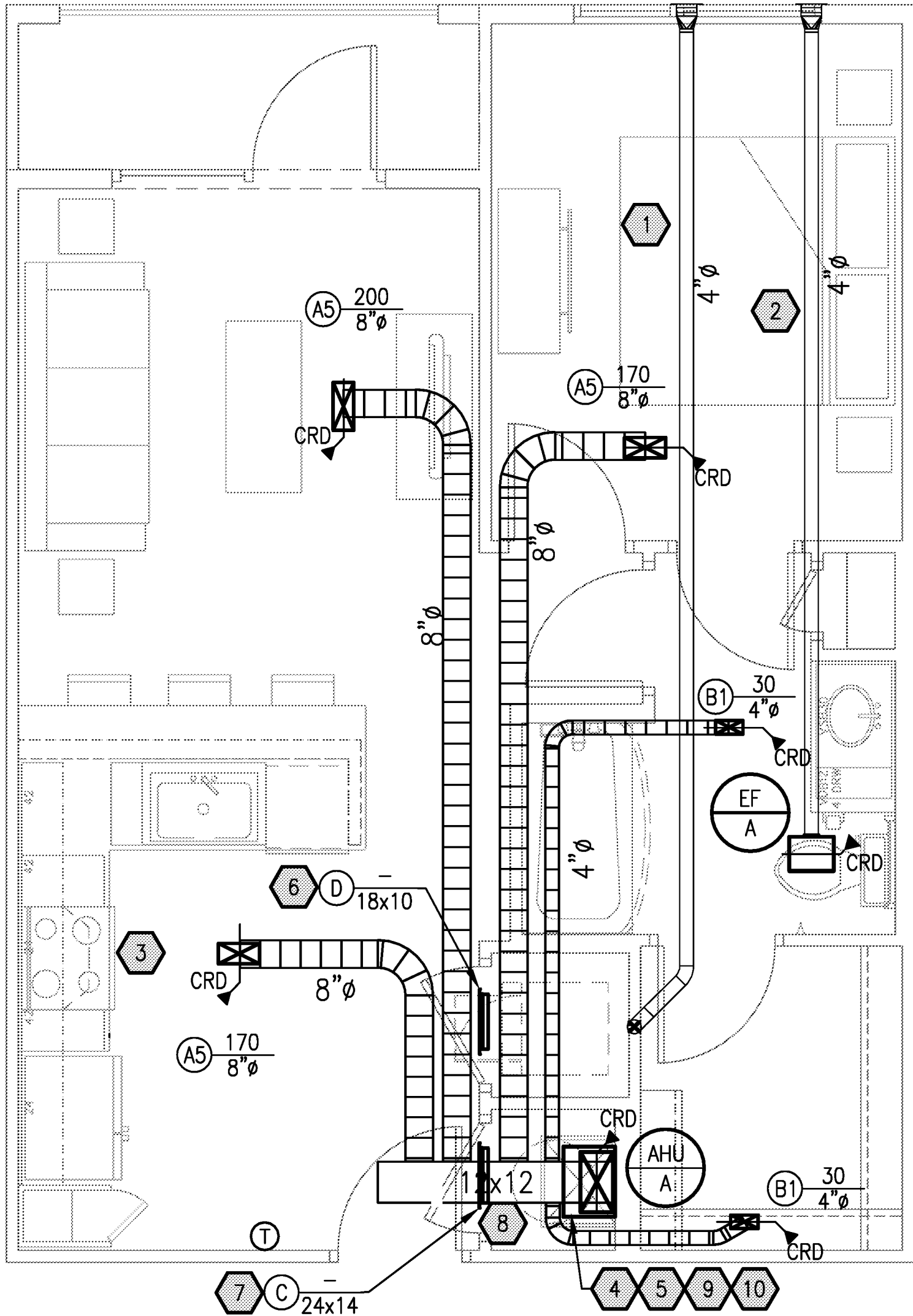
27

Unit A1 - Ceiling Plan

Scale: 1/4" = 1'-0"



MECHANICAL



1 UNIT A1 — CONDITION 1
SCALE: 1/4" = 1'-0" CONDITION 2 IS SIMILAR



MECHANICAL

KEYED NOTES: (APPLY TO THIS SHEET ONLY)

- 1 4"Ø DRYER EXHAUST FROM VENT BOX ROUTED IN CEILING TO EXTERIOR WALL CAP.
- 2 4"Ø BATH EXHAUST ROUTED IN CEILING TO EXTERIOR WALL CAP.
- 3 RECIRCULATING MICROWAVE VENT FAN BY OTHERS.
- 4 ROUTE S.A. DUCT UP INTO STRUCTURE WITH RADIATION DAMPER AT CEILING PENETRATION, PROVIDE ACCESS PANEL IN PLENUM BOX TO SERVICE DAMPER.
- 5 ROUTE 3/4" CONDENSATE TO HUB DRAIN, REFER TO PLUMBING FOR EXACT LOCATION.
- 6 PROVIDE MAKE-UP AIR GRILLES ABOVE DOOR & 3/4" UNDERCUT DOOR; MINIMUM 120 SQ. IN. OF FREE AREA FOR AIR TRANSFER.
- 7 RETURN AIR THRU RETURN GRILLE ABOVE DOOR.
- 8 FIBERGLASS DUCT BOARD LENGTH AS REQUIRED FOR THE FLEX DUCT CONNECTIONS. FULL SIZE TRANSITION DOWN TO UNIT CONNECTION.
- 9 PROVIDE CEILING MOUNTED SMOKE DETECTOR IN MECHANICAL CLOSET. AIR HANDLING UNIT SHALL BE SHUT OFF UPON ACTIVATION OF THE SMOKE DETECTOR. PROVIDE ALL CONTROL WIRING AND INTERLOCK.
- 10 REFRIGERANT LINESETS UP TO CONDENSING UNITS ON ROOF.

UNIT A2

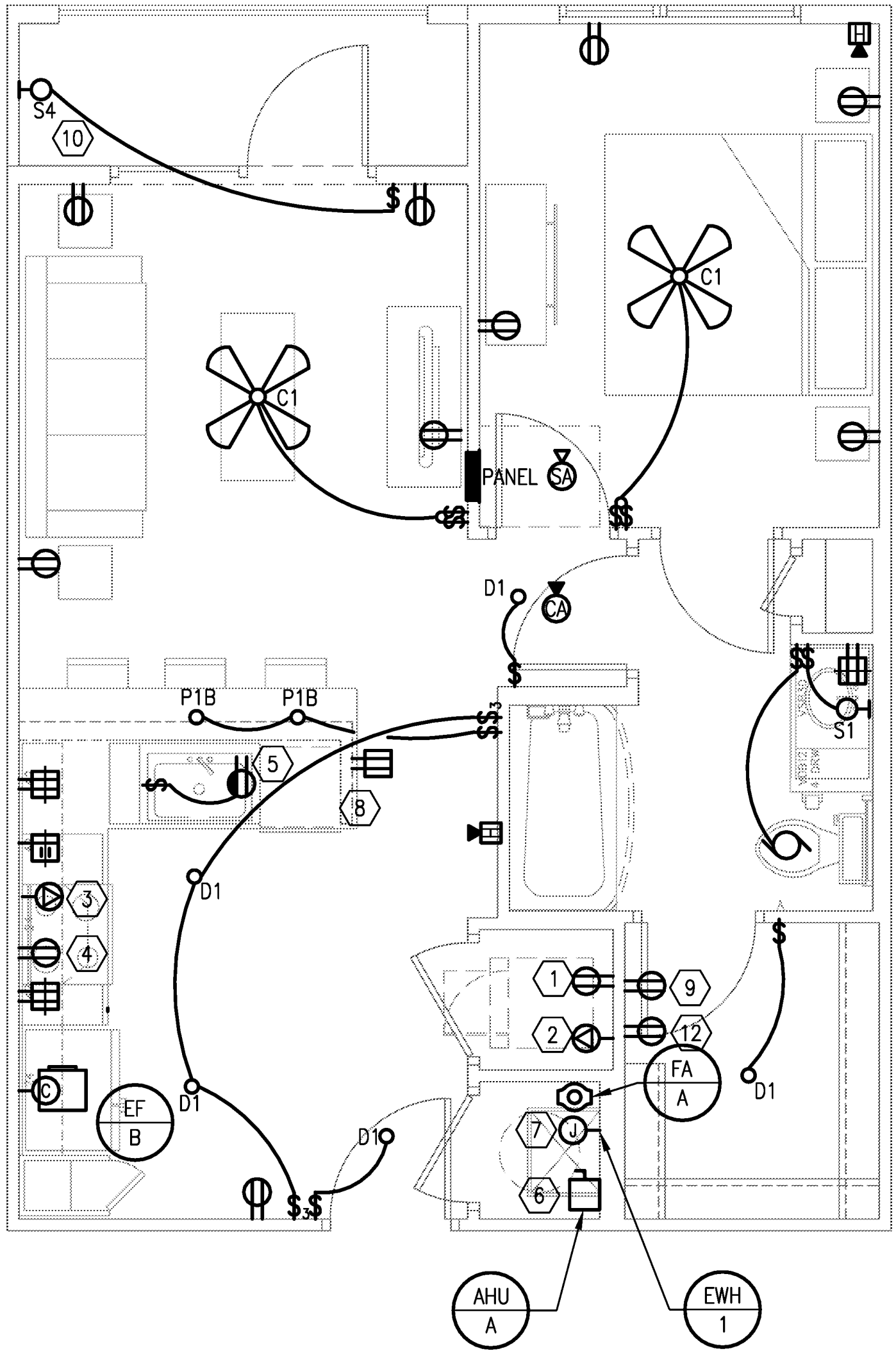
CLOTHES DRYER VENT LENGTH CALCULATION - 4" DUCT

ELBOW TYPE	ELBOW DEGREES	ELBOW RADIUS (IN)	ELBOW EQUIVALENT LENGTH (FT)	QTY OF ELBOWS	TOTAL EQUIVALENT LENGTH (FT)
RADIUS MITERED	90	4	5'-0"	1	5'-0"
RADIUS MITERED	45	4	2'-6"	1	2'-6"
TOTAL EQUIVALENT LENGTH - FITTINGS:					7'-6"
TOTAL HORIZONTAL LENGTH:					26'-8"
TOTAL VERTICAL LENGTH:					9'-0"
TOTAL SYSTEM EQUIVALENT LENGTH:					43'-2"
[X]	DRYER - OWNER PROVIDED MAKE: WHIRLPOOL D4 MODEL NO: WETLV27FW TOTAL MANUFACTURER'S ALLOWABLE LENGTH: SEE CHART				
[]	CLOTHES DRYER MAKE AND MODEL UNKNOWN				
[]	*DRYER COMPLIES WITH MAXIMUM ALLOWABLE LENGTH (35'-0")				

NOTE: CALCULATIONS ARE BASED ON THE 2012 IMC. THE DESIGN INCORPORATES A CLOTHES DRYER EXHAUST WALL RECEPTOR WHICH ELIMINATES THE REQUIREMENT FOR ONE 90 DEGREE ELBOW.



ELECTRICAL



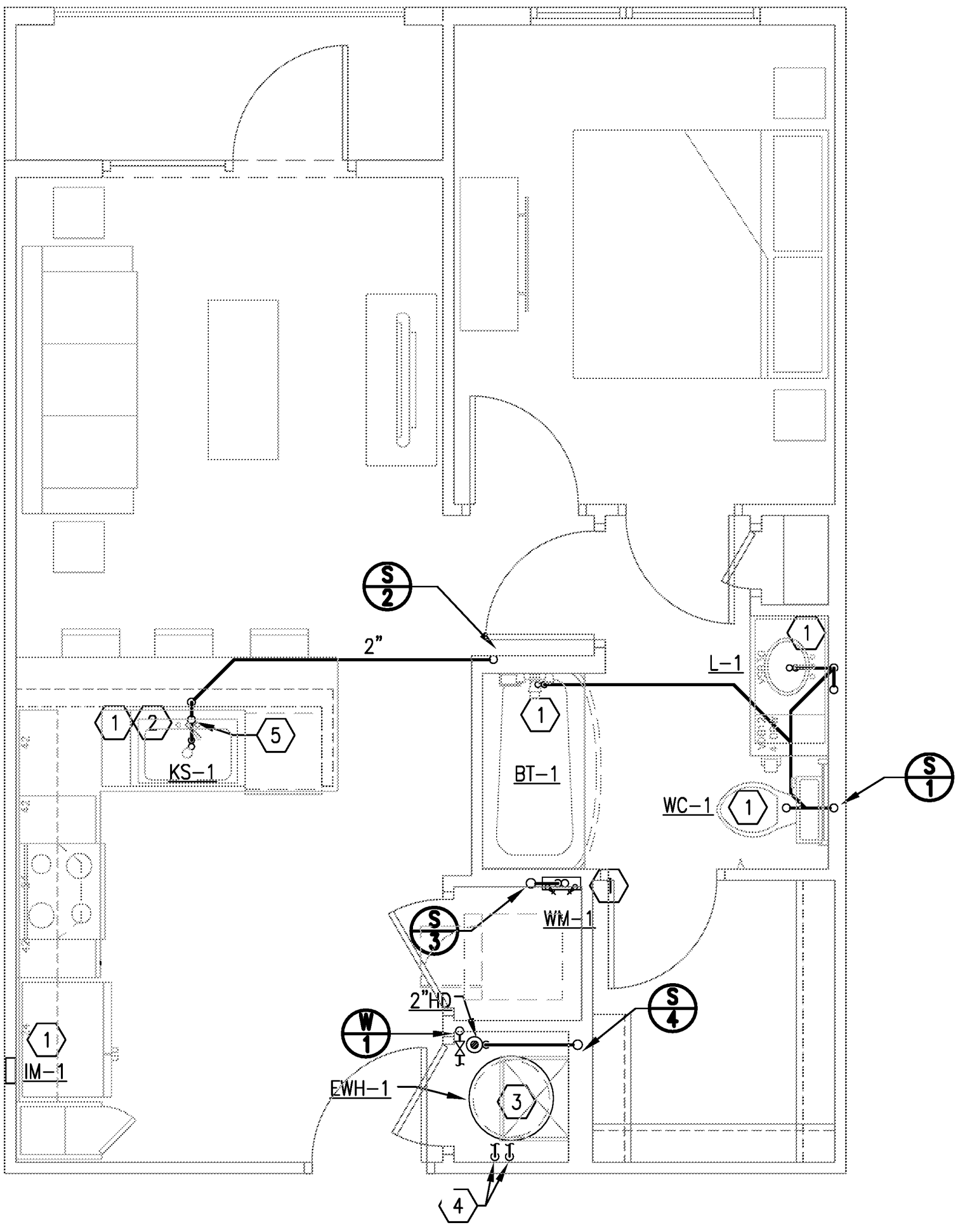
1

UNIT A1 — CONDITION 1

SCALE: 1/4" = 1'-0"



PLUMBING



1

UNIT A1

SCALE: 1/4" = 1'-0"

JOB#8027

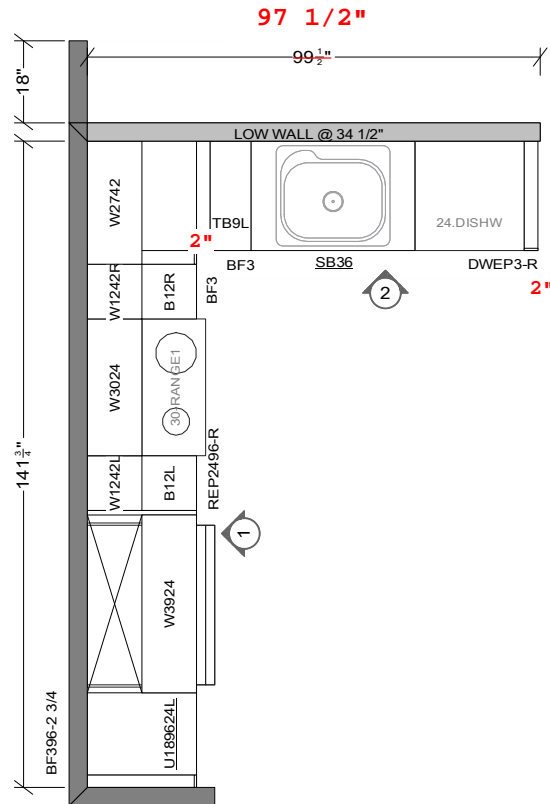
CABINETS:

MANHATTAN - FRAMLESS
STONE LINEN THERMOFOIL
VERTICAL GRAIN

HARDWARE:

HW00327

STONE TOPS BY ABSOLUTE STONE



UNIT TYPE:

A1 PREMIUM

QUANTITY:

4

PROJECT NAME:

PARKWOOD STATION

REPUBLIC ID:

CHARLOTTE, NC 309+3

GENERAL CONTRACTOR:

NRP

REVISION#/DATE:

REV. #1 1-2-18

BLUEPRINT DATE:

ISSUE FOR CONSTRUCTION 3-24-17

SHEET:

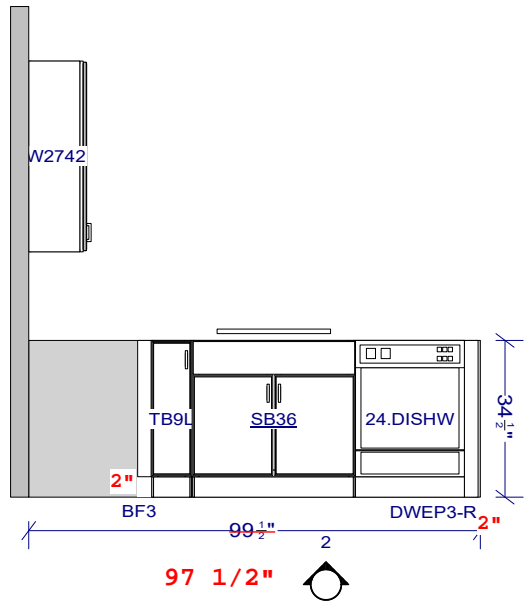
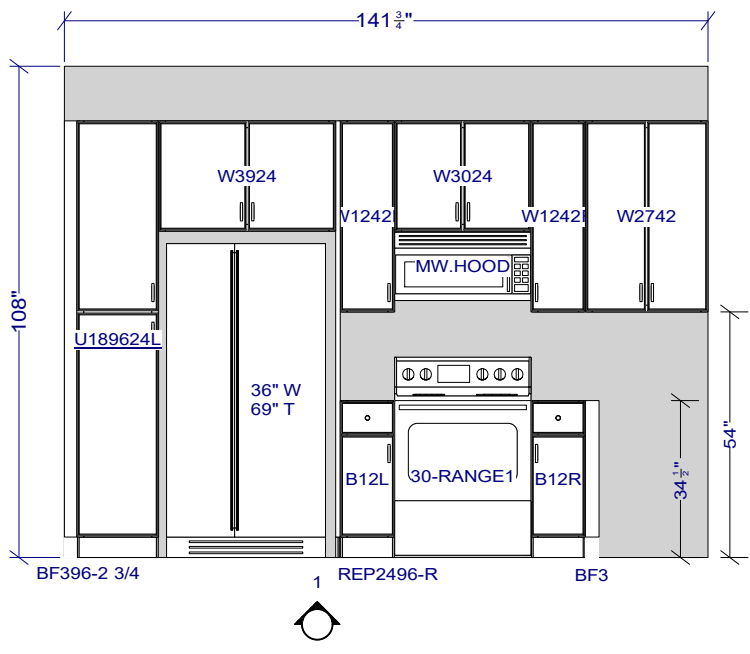
19

JOB#8027

CABINETS:
 MANHATTAN - FRAMLESS
 STONE LINEN THERMOFOIL
 VERTICAL GRAIN

HARDWARE:
 HW00327

STONE TOPS BY ABSOLUTE STONE



ELEVATIONS

UNIT TYPE:	A1 PREMIUM
QUANTITY:	4
PROJECT NAME:	PARKWOOD STATION
REPUBLIC ID:	CHARLOTTE, NC 309 + 3
GENERAL CONTRACTOR:	NRP
REVISION#/DATE:	REV. #1 1-2-18
BLUEPRINT DATE:	ISSUE FOR CONSTRUCTION 3-24-17
SHEET:	20

JOB#8027

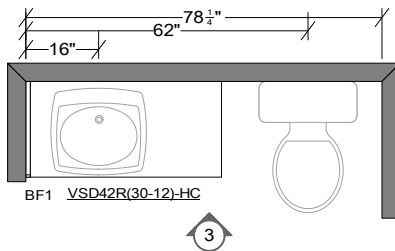
CABINETS:

MANHATTAN - FRAMLESS
STONE LINEN THERMOFOIL
VERTICAL GRAIN

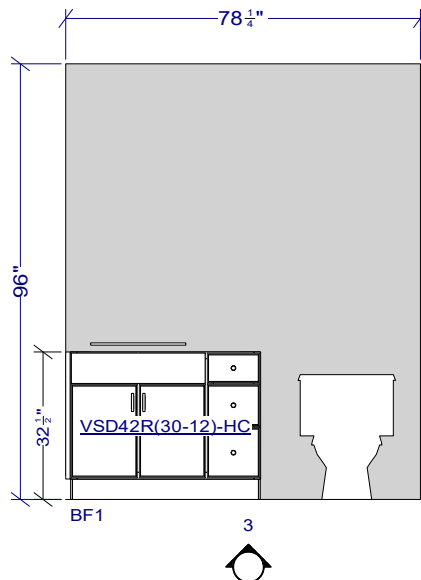
HARDWARE:

HW00327

STONE TOPS BY ABSOLUTE STONE



FLOOR PLAN



ELEVATION

UNIT TYPE:

A1 PREMIUM

QUANTITY:

4

PROJECT NAME:

PARKWOOD STATION

REPUBLIC ID:

CHARLOTTE, NC 309 + 3

GENERAL CONTRACTOR:

NRP

REVISION#/DATE:

REV. #1 1-2-18

BLUEPRINT DATE:

ISSUE FOR CONSTRUCTION 3-24-17

SHEET:

21